

2021 FAIRFIELD UNION LOCAL SCHOOLS SEALING, STRIPING AND PAVEMENT REPAIR PROJECT
Fairfield Union Local Schools
6417 Cincinnati-Zanesville Road NE
Lancaster, OH 43130

Primary Contact: Chad Belville (chadbelville@fairfieldunion.org or 740-536-7384)

LEGAL NOTICE

Fairfield Union Local Schools is seeking quotes for sealing and pavement repair on the Pleasantville Elementary School (PES) Campus and Bremen Elementary School (BES) Campus. Preference will be given to vendors who can complete work between June 21st and July 9th, 2021.

Cost proposals will be received by email at chadbelville@fairfieldunion.org or by the USPS at Fairfield Union Local School District (Attn: Chad Belville), 6417 Cincinnati-Zanesville Rd NE, Lancaster, OH 43130, until 3 pm, local time, on March 5, 2021, to provide sealant, striping and any asphalt repair services to the marked lots on the attached maps of PES and BES.

Contact Chad Belville at (740-536-7384) to schedule a site visit to record measurements of the area, to answer any questions, and to submit a proposal between the hours of 7:30 a.m. and 3:00 p.m. local time.

The District reserves the right to waive irregularities in proposals, to reject any or all proposals, and to conduct such investigation as necessary to determine the responsibility of a vendor.

QUOTE SUBMISSION REQUIREMENTS

1. Quote for sealing and striping to be completed at PES. Yellow areas indicate playground areas that will require sealing and striping as well.
2. Quote for sealing and striping to be completed at BES. Yellow areas indicate playground areas that will require sealing and striping as well.
3. Quote or Allowance for any potential asphalt repairs for the entire project.

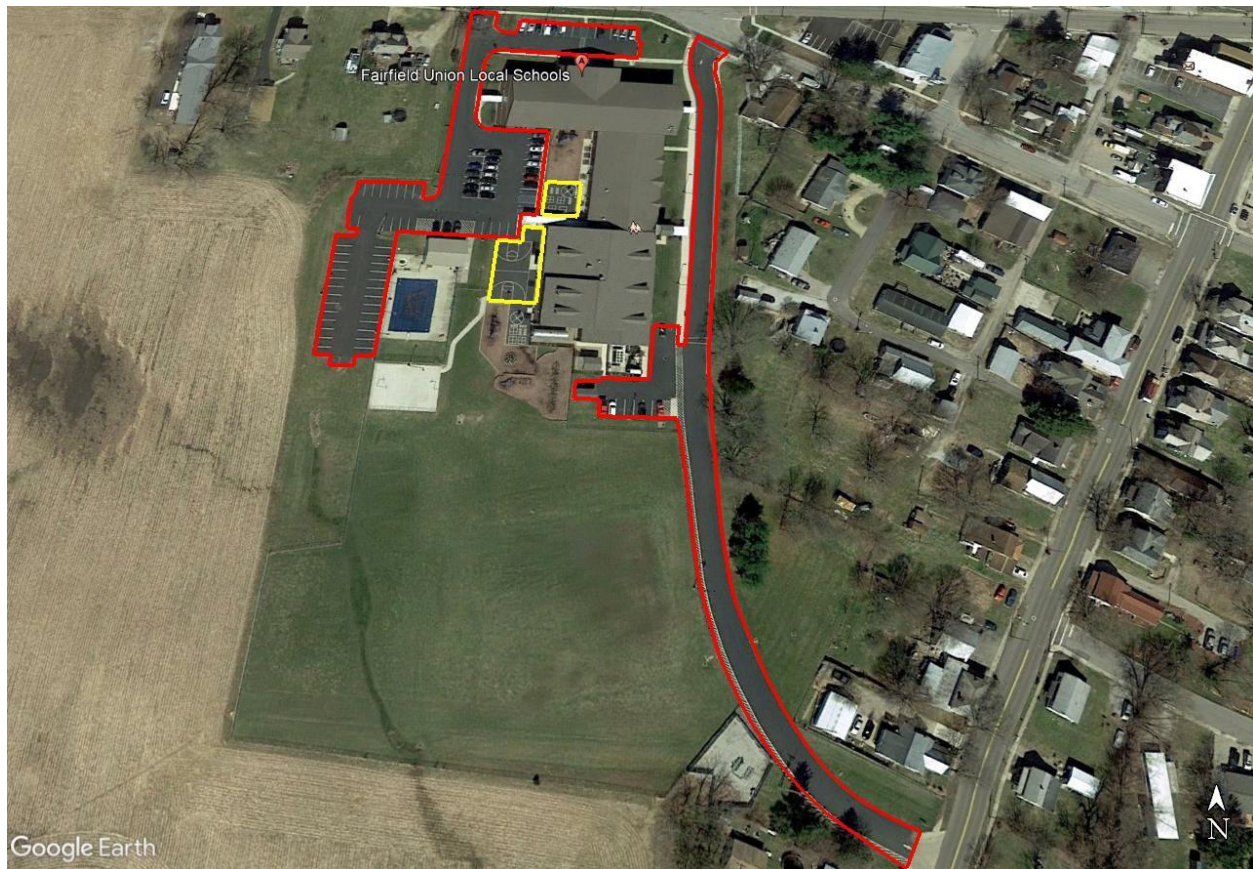
SEALING QUOTE ELEMENTS

1. Clean existing pavement of all dirt and debris using power cleaner.
2. Longitudinal and traverse cracks larger than ¼" and less than 1½" will be filled with Crackmaster Parking lot Grade (or similar) hot rubberized joint sealant.
3. Apply two coats of Sealmaster Asphalt Emulsion (or similar) pavement sealer fortified with surfactants to promote superior adhesion and durability.
4. Silica sand shall be added to the sealer at the rate of 3 lbs/gal to enhance skid resistance and coating durability. TopTuff (or similar) sealer added to anchor in aggregates.
5. Stripe to existing layouts.

ASPHALT REPAIR ELEMENTS

1. Provide spot milling of existing pavement to an average depth of 2”.
2. Remove millings from site.
3. Clean existing pavement of all dirt and debris using power cleaner.
4. Tack-coat with SS-1 liquid to assure proper bond, using power distributor.
5. Install asphalt patches #448-1 Hot Mix asphalt compacted level with the existing grade.
6. Apply hot rubberized joint sealant where new edge meets existing pavement.
7. Repair of potholes in lots in addition to milled out areas.

Pleasantville Elementary School Campus



Bremen Elementary School Campus

